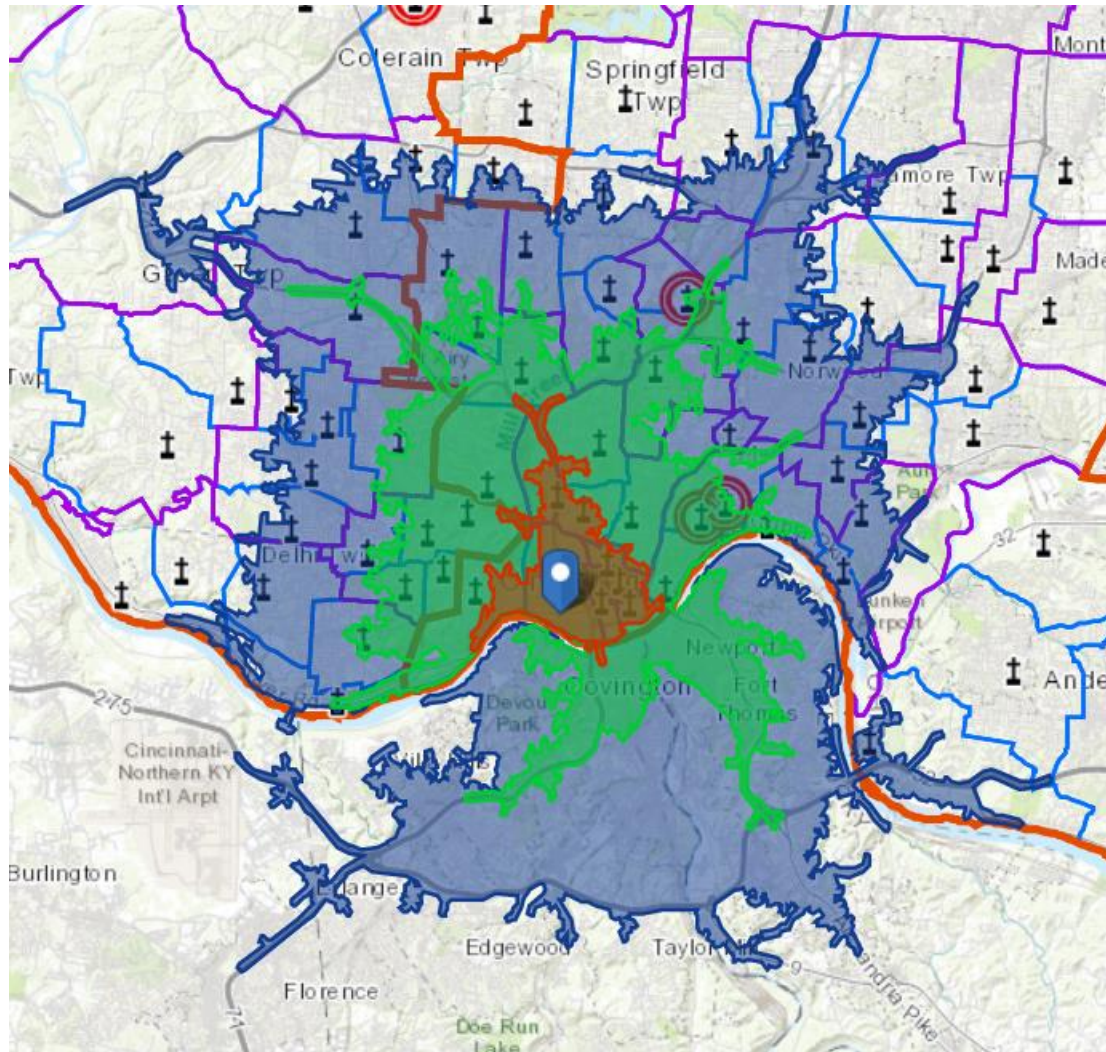


Parishioner Map – the image below captures all registered parishioners within a reasonable mapping distance from the parish. “Where are my parishioners located?” “Does the map tell me anything about the parishioners who attend the parish?”

No Parishioner Data Provided

5-10-15 Minute Driving Map – the map presents the driving time from the parish overlaid on top of your registered parishioners. “How long will my parishioners drive to get to the parish or events?” “Do certain roadways impact who attends the parish and/or extend our virtual territory reach because of reasonable drive times?”



5-10-15 Mile Driving Map – the map presents the driving distances from the parish overlayed on top of your registered parishioners. “How far will my parishioners drive to get to the parish?” “What other parishes do they pass to get here?” Do certain communities make up most of our parishioners?”

