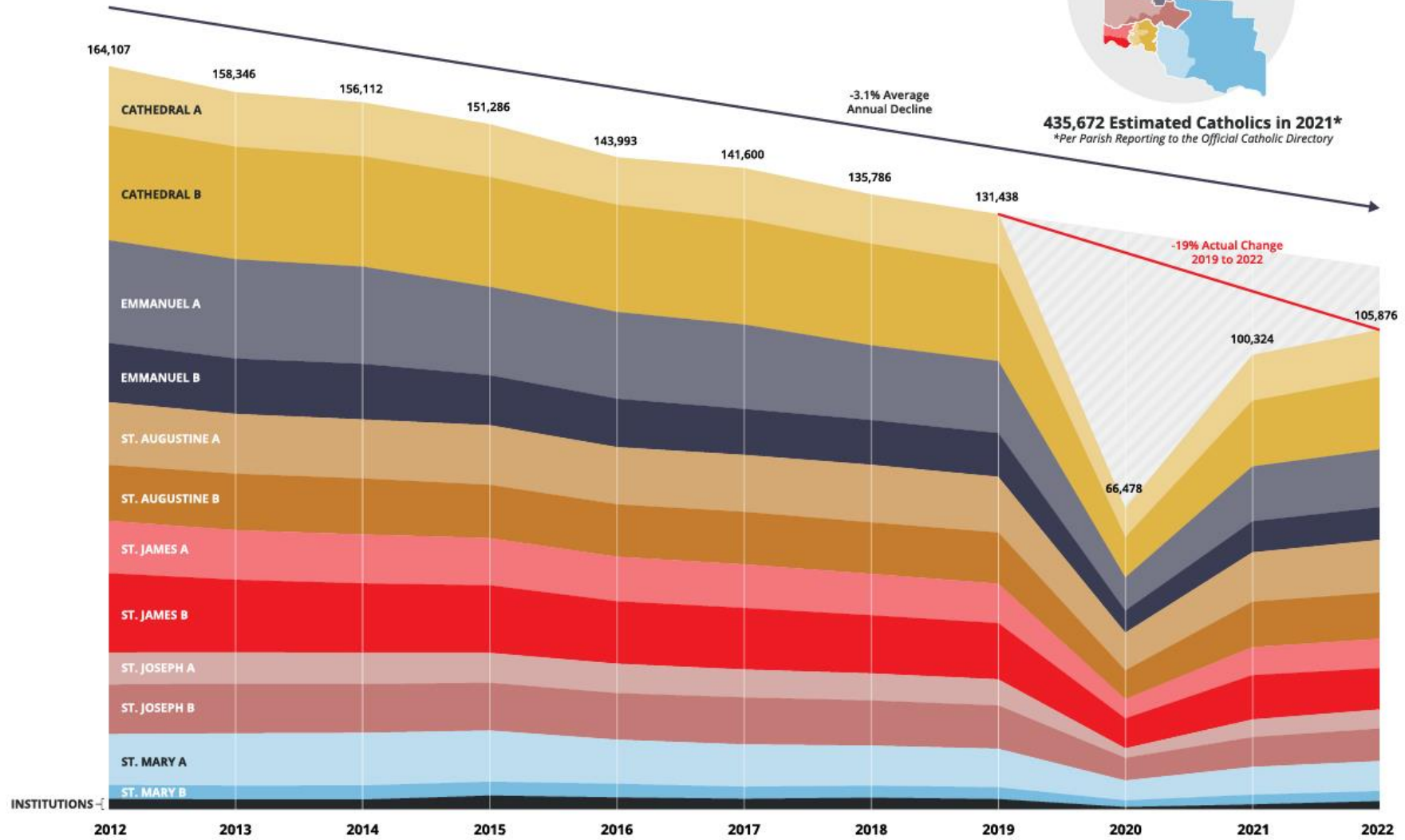


ARCHDIOCESE OF CINCINNATI  
**OCTOBER COUNTS**

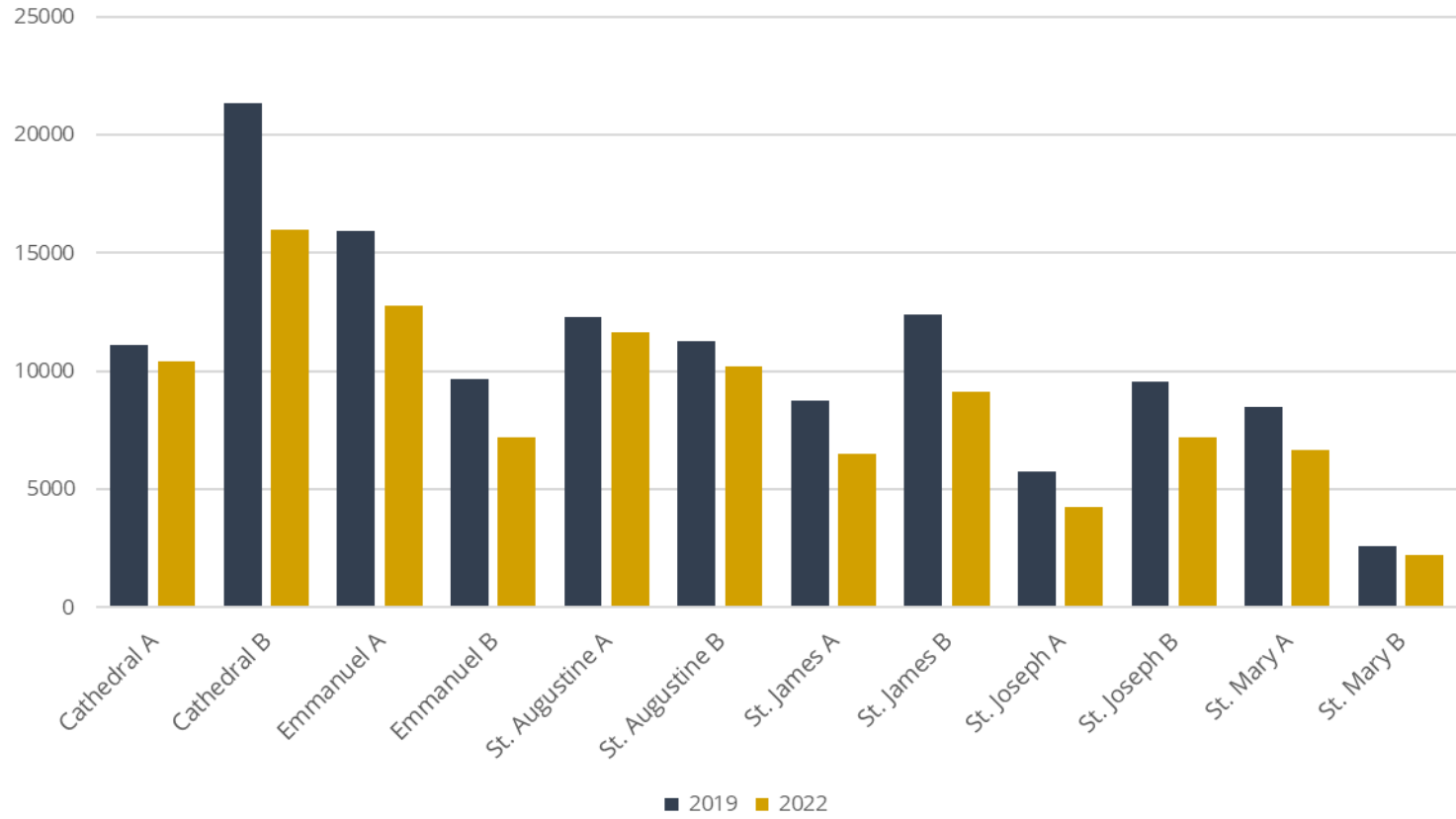
	Number of Churches	2012	2013	2014	2015	2016	2017	2018	2019	2020	2021	2022	Annual Change	Percent Change
 <b>CATHEDRAL A</b> <i>SOUTH A</i>	26	13,134	12,030	11,891	11,663	10,489	11,288	10,879	11,116	6,450	10,127	10,428	301	3%
 <b>CATHEDRAL B</b> <i>SOUTH B</i>	25	25,324	24,857	24,402	24,280	23,689	23,262	22,457	21,365	8,884	14,520	15,991	1,471	10%
 <b>EMMANUEL A</b> <i>NORTHEAST A</i>	25	22,704	21,935	21,469	19,525	19,166	18,661	16,504	15,908	7,330	12,115	12,784	669	6%
 <b>EMMANUEL B</b> <i>NORTHEAST B</i>	24	13,055	12,232	12,280	11,016	10,687	10,145	9,881	9,643	4,837	6,847	7,197	350	5%
 <b>ST. AUGUSTINE A</b> <i>NORTHWEST A</i>	25	13,864	13,200	13,034	13,172	12,634	12,572	12,722	12,305	8,344	10,902	11,657	755	7%
 <b>ST. AUGUSTINE B</b> <i>NORTHWEST B</i>	20	12,330	12,473	12,346	11,765	11,578	11,596	11,370	11,293	6,366	10,016	10,198	182	2%
 <b>ST. JAMES A</b> <i>SOUTHWEST A</i>	10	11,592	10,953	10,824	10,425	9,846	9,631	9,148	8,728	4,245	6,216	6,477	261	4%
 <b>ST. JAMES B</b> <i>SOUTHWEST B</i>	17	17,511	16,001	15,346	14,931	13,785	13,596	12,842	12,408	6,589	9,774	9,122	-652	-7%
 <b>ST. JOSEPH A</b> <i>CENTRAL A</i>	12	7,069	6,977	6,876	6,598	6,489	6,164	5,974	5,766	2,124	3,896	4,228	332	9%
 <b>ST. JOSEPH B</b> <i>CENTRAL B</i>	6	10,960	10,941	10,792	10,546	10,284	10,391	9,962	9,561	4,988	6,587	7,171	584	9%
 <b>ST. MARY A</b> <i>SOUTHEAST A</i>	13	11,246	11,535	11,616	11,301	9,746	9,337	8,845	8,505	4,386	6,137	6,640	503	8%
 <b>ST. MARY B</b> <i>SOUTHEAST B</i>	11	3,066	3,076	3,124	3,068	3,002	2,667	2,663	2,612	1,460	2,140	2,217	77	4%
 <b>INSTITUTIONS</b>		2,252	2,136	2,112	2,996	2,598	2,290	2,539	2,228	475	1,047	1,766	719	69%
<b>Totals:</b>		<b>164,107</b>	<b>158,346</b>	<b>156,112</b>	<b>151,286</b>	<b>143,993</b>	<b>141,600</b>	<b>135,786</b>	<b>131,438</b>	<b>66,478</b>	<b>100,324</b>	<b>105,876</b>	<b>5,552</b>	<b>6%</b>
<b>Rolling Percent Change:</b>			-3.5%	-1.4%	-3.1%	-4.8%	-1.7%	-4.1%	-3.2%	-49.4%	50.9%	5.5%		
													<b>Compared to 2019:</b>	<b>-25,562 -19%</b>

# ARCHDIOCESE OF CINCINNATI OCTOBER COUNTS



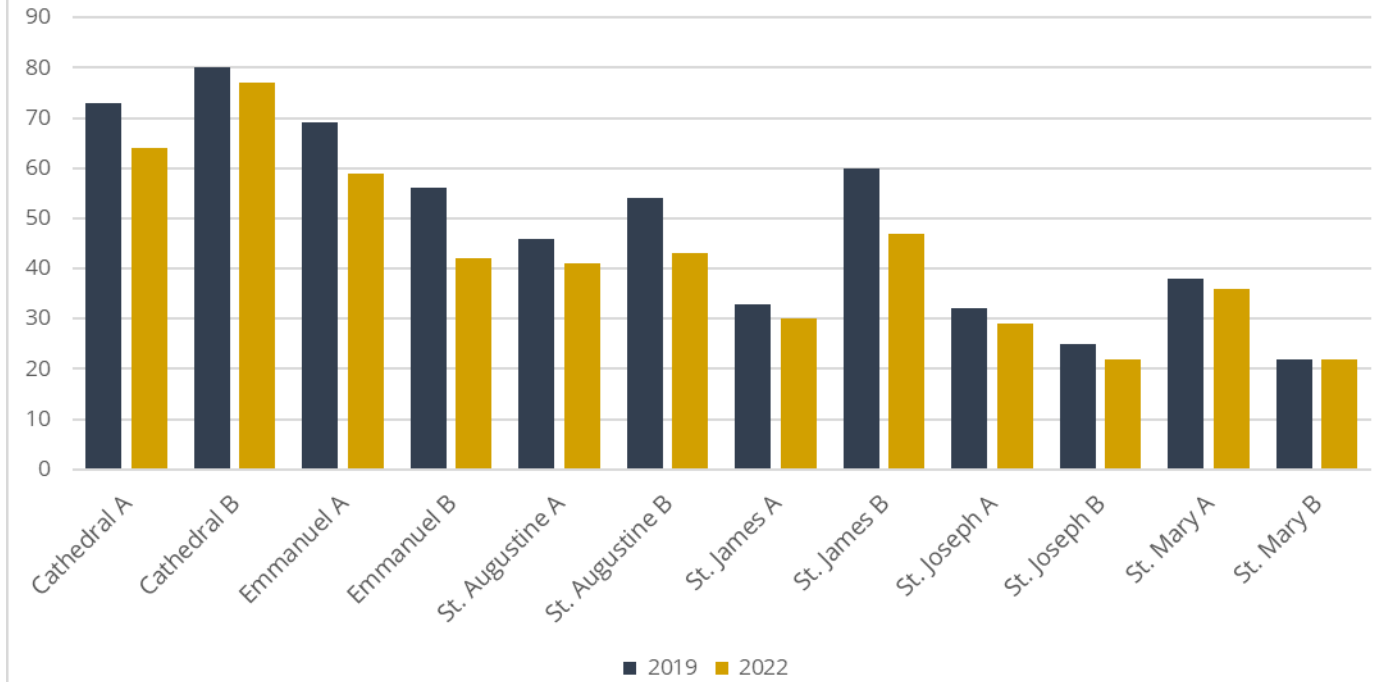
# October Mass Count Change

2019 to 2022

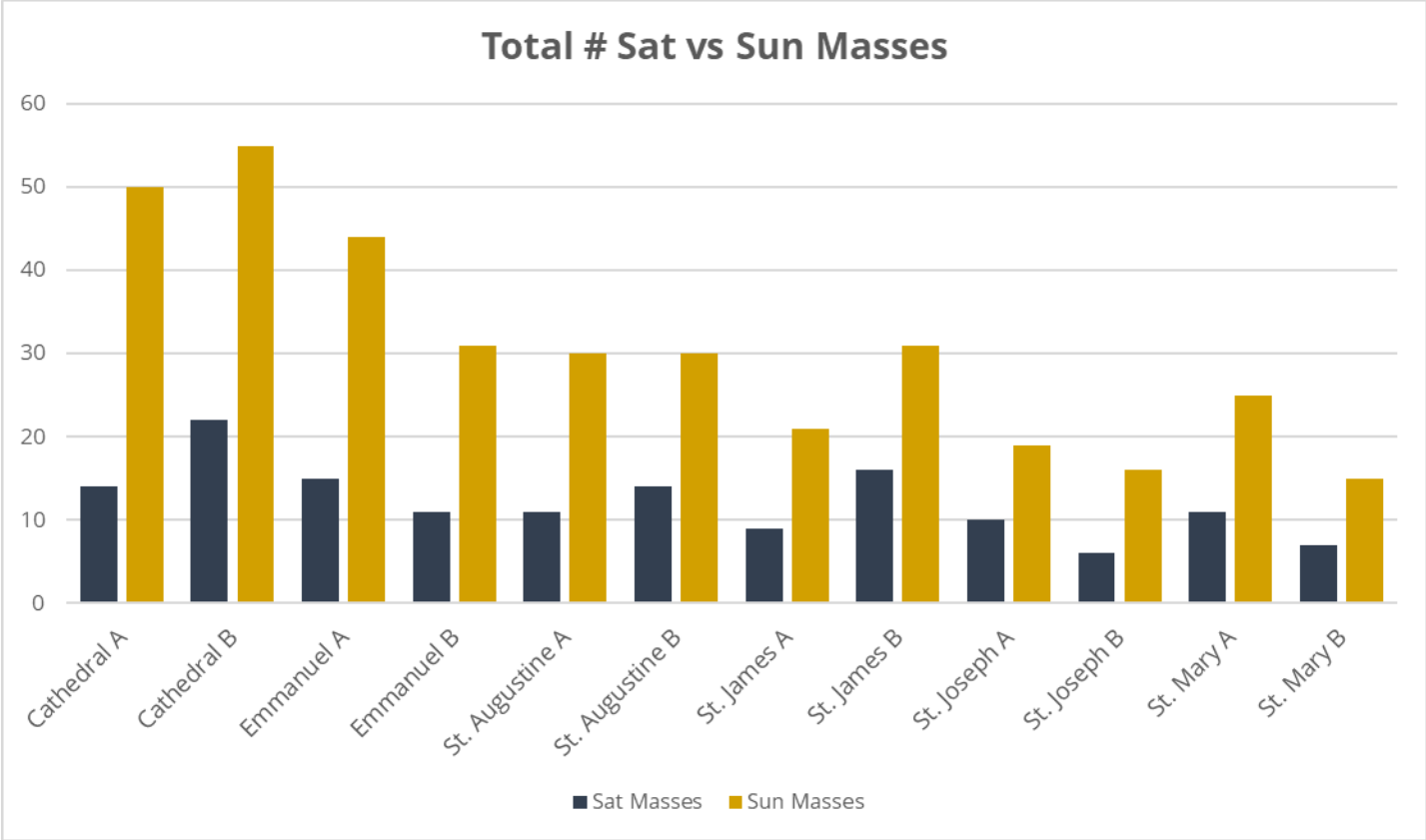


### Total # Weekend Masses

2019 to 2022

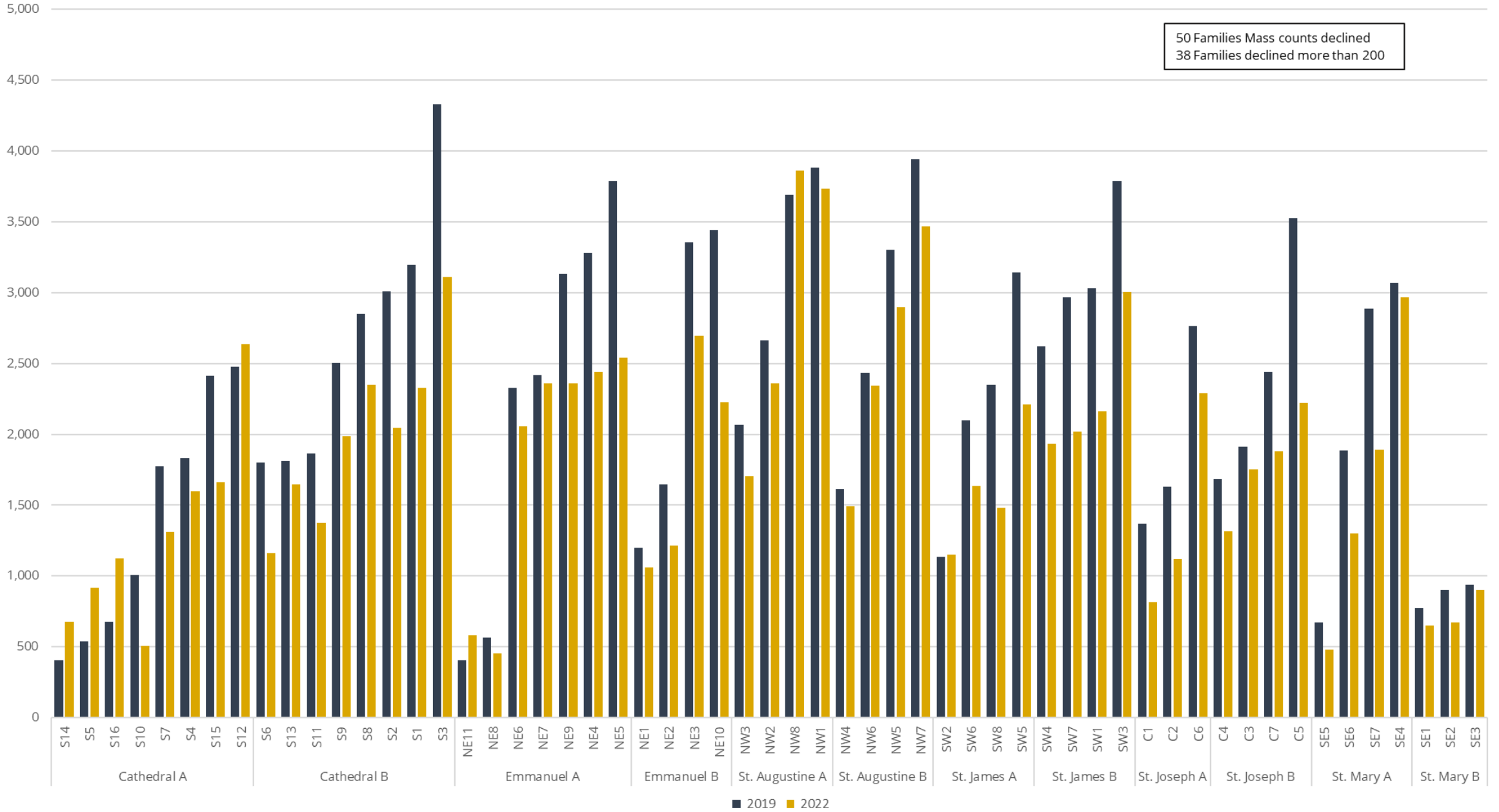


Total # Sat vs Sun Masses



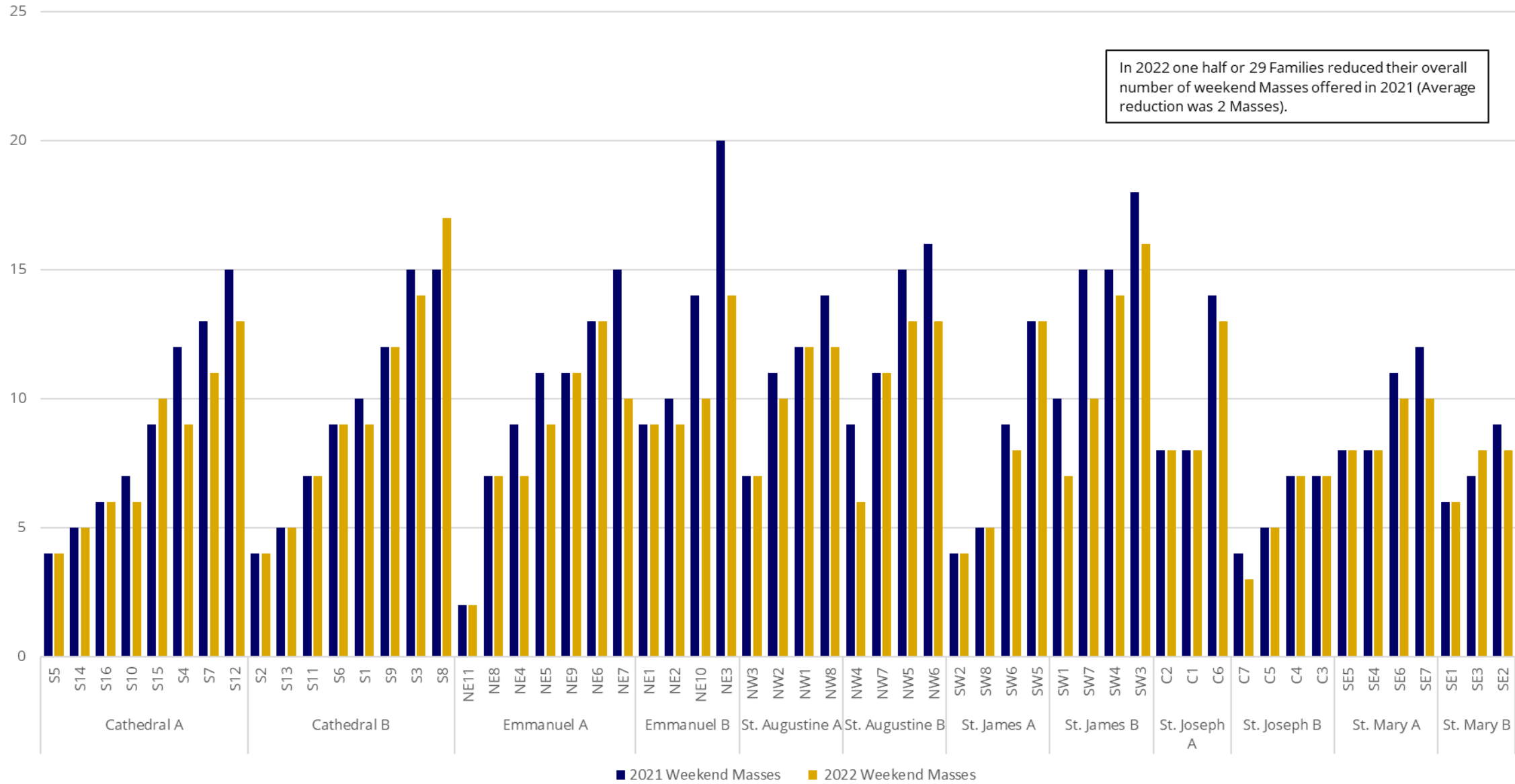
# October Mass Count Change 2019 to 2022

50 Families Mass counts declined  
38 Families declined more than 200



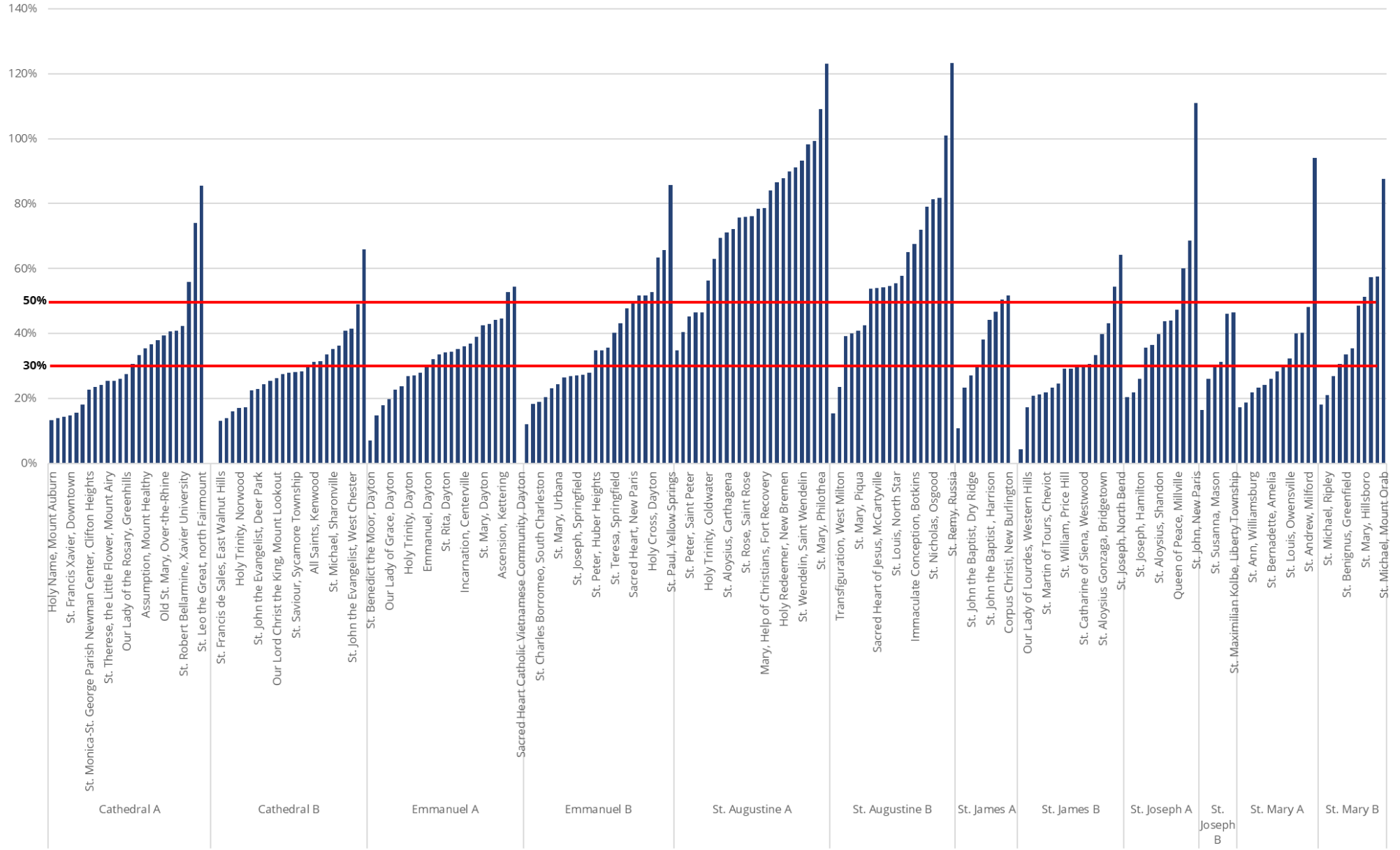
### Total # Weekend Masses by Family

In 2022 one half or 29 Families reduced their overall number of weekend Masses offered in 2021 (Average reduction was 2 Masses).



# % Weekend Utilization of Reported Church Seating Capacity

152 below 50%, 82 below 30%



■ Total

\*Those above 100% have utilized unused space beyond the reported available seating number