



TAPESTRY SEGMENTATION

The Fabric of America's Neighborhoods

Tapestry LifeMode				
	Households	HHs %	% US HHs	Index
learn more...				
Affluent Estates (L1)	0	0.00%	9.9%	0
Upscale Avenues (L2)	0	0.00%	5.7%	0
Uptown Individuals (L3)	0	0.00%	3.8%	0
Family Landscapes (L4)	0	0.00%	7.5%	0
GenXurban (L5)	0	0.00%	11.4%	0
Cozy Country Living (L6)	0	0.00%	12.0%	0
Ethnic Enclaves (L7)	0	0.00%	7.1%	0
Middle Ground (L8)	20	2.91%	10.9%	27
Senior Styles (L9)	668	97.09%	5.8%	1,677
Rustic Outposts (L10)	0	0.00%	8.2%	0
Midtown Singles (L11)	0	0.00%	6.2%	0
Hometown (L12)	0	0.00%	6.1%	0
Next Wave (L13)	0	0.00%	3.9%	0
Scholars and Patriots (L14)	0	0.00%	1.6%	0

Key Facts



\$230,000
Median Home Value



\$41,846
Median HH Income

5.5

Home Value to
Income Ratio

35.8

Median Age

688

Households

Education



16%
No HS Diploma



19%
HS Graduate

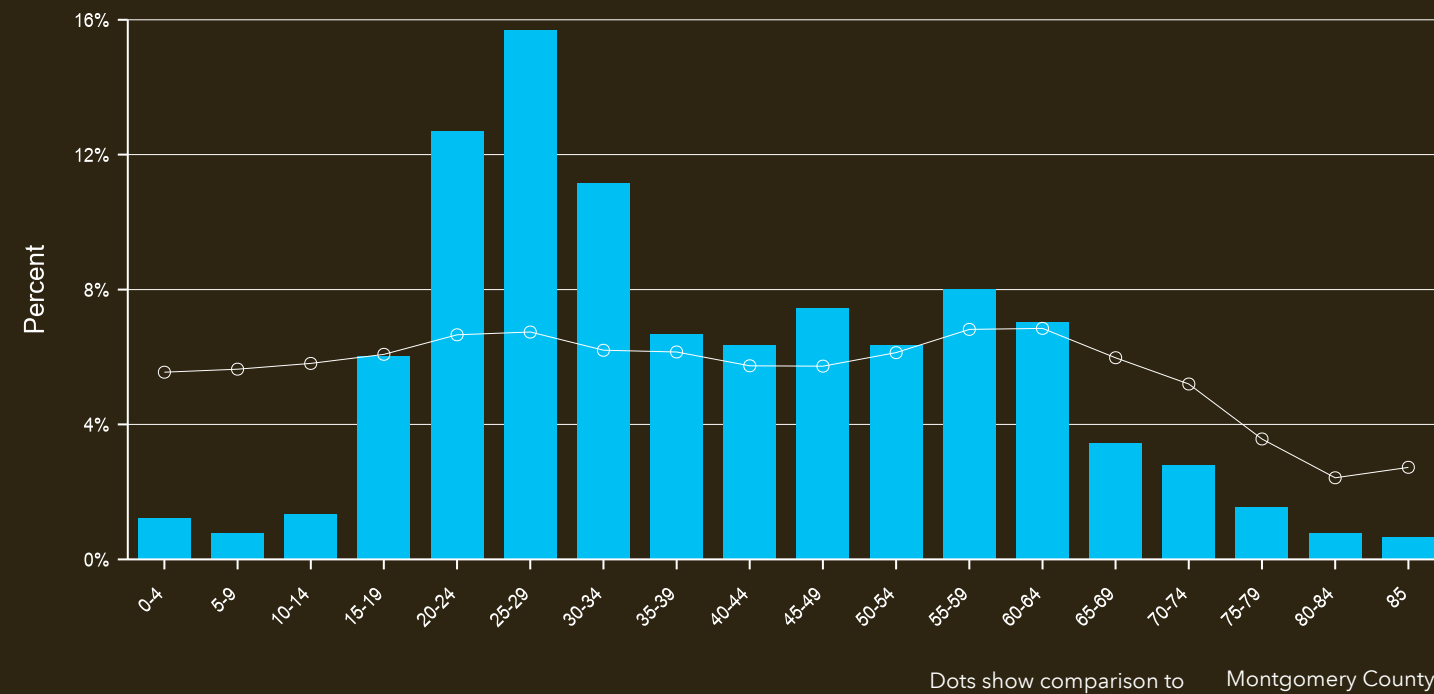


30%
Some College



35%
Degree or Higher

Age Profile



Households By Income

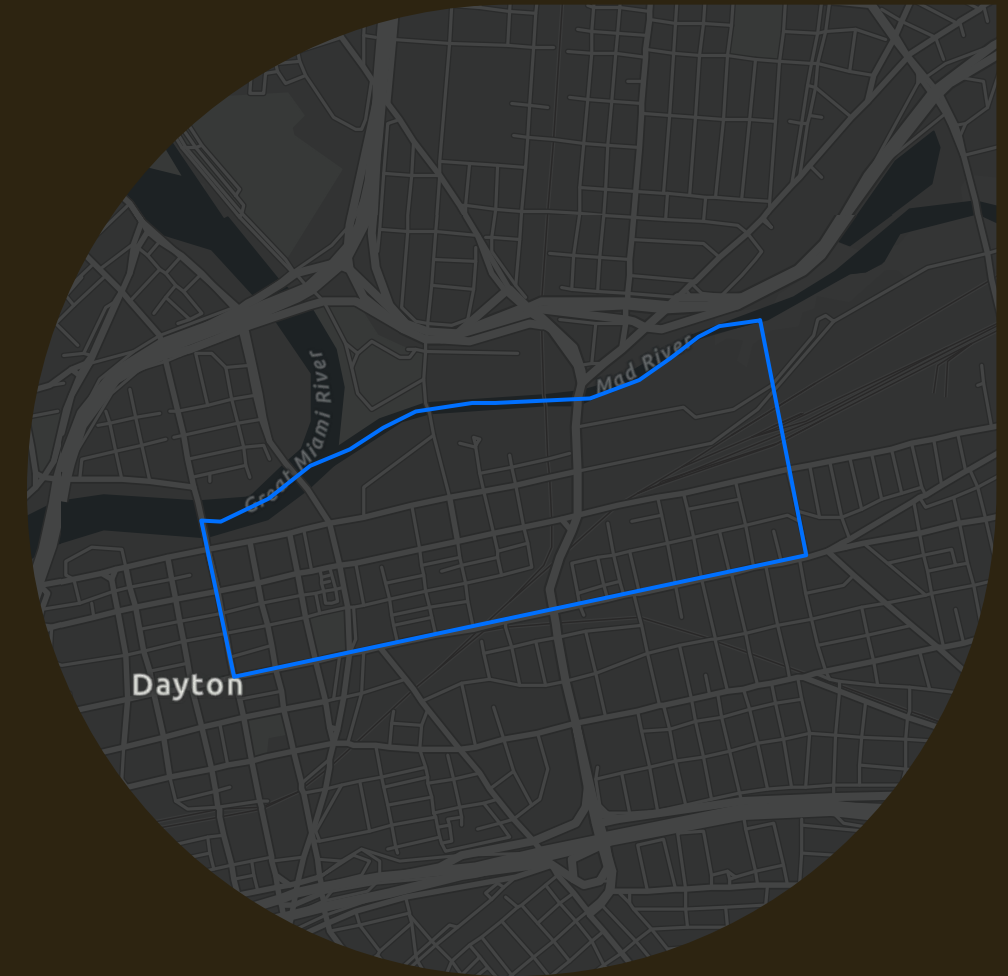
The largest group: <\$15,000 (33.1%)

The smallest group: \$200,000+ (2.5%)

Indicator	Value	Difference
<\$15,000	33.1%	+21.8%
\$15,000 - \$24,999	3.5%	-7.3%
\$25,000 - \$34,999	7.1%	-3.5%
\$35,000 - \$49,999	11.9%	-1.0%
\$50,000 - \$74,999	18.8%	+0.3%
\$75,000 - \$99,999	12.2%	-1.7%
\$100,000 - \$149,999	8.1%	-5.8%
\$150,000 - \$199,999	2.9%	-1.2%
\$200,000+	2.5%	-1.4%

Bars show deviation from
Montgomery County

Parish Boundaries: St. Joseph (Dayton)



Tapestry Segments



9F

Social Security Set

668 households

97.1%

of Households



8C

Hometown Heritage

20 households

2.9%

of Households

This infographic contains data provided by Esri.
The vintage of the data is 2020.

© 2020 Esri