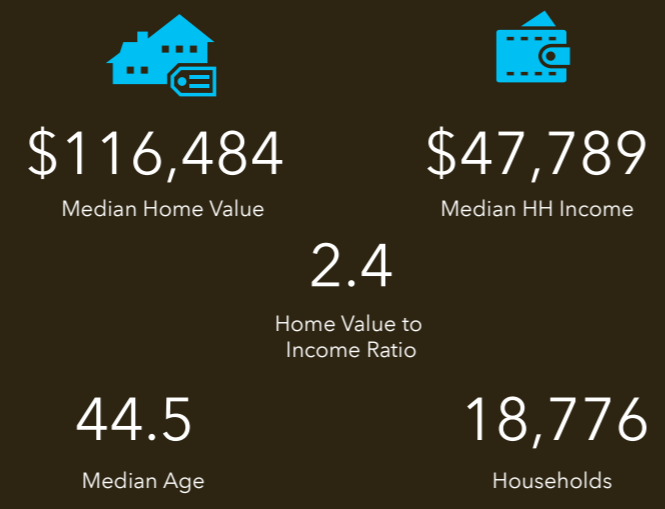




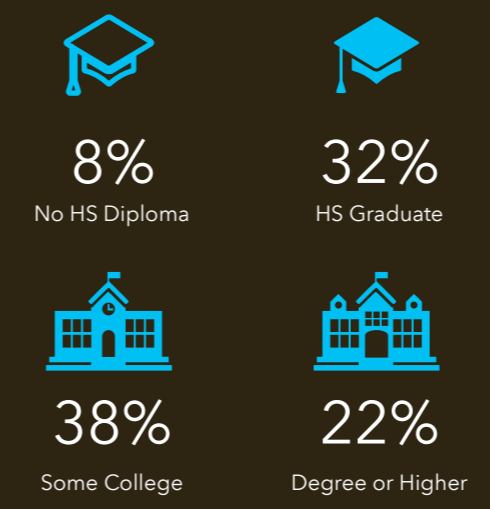
# TAPESTRY SEGMENTATION

The Fabric of America's Neighborhoods

## Key Facts



## Education

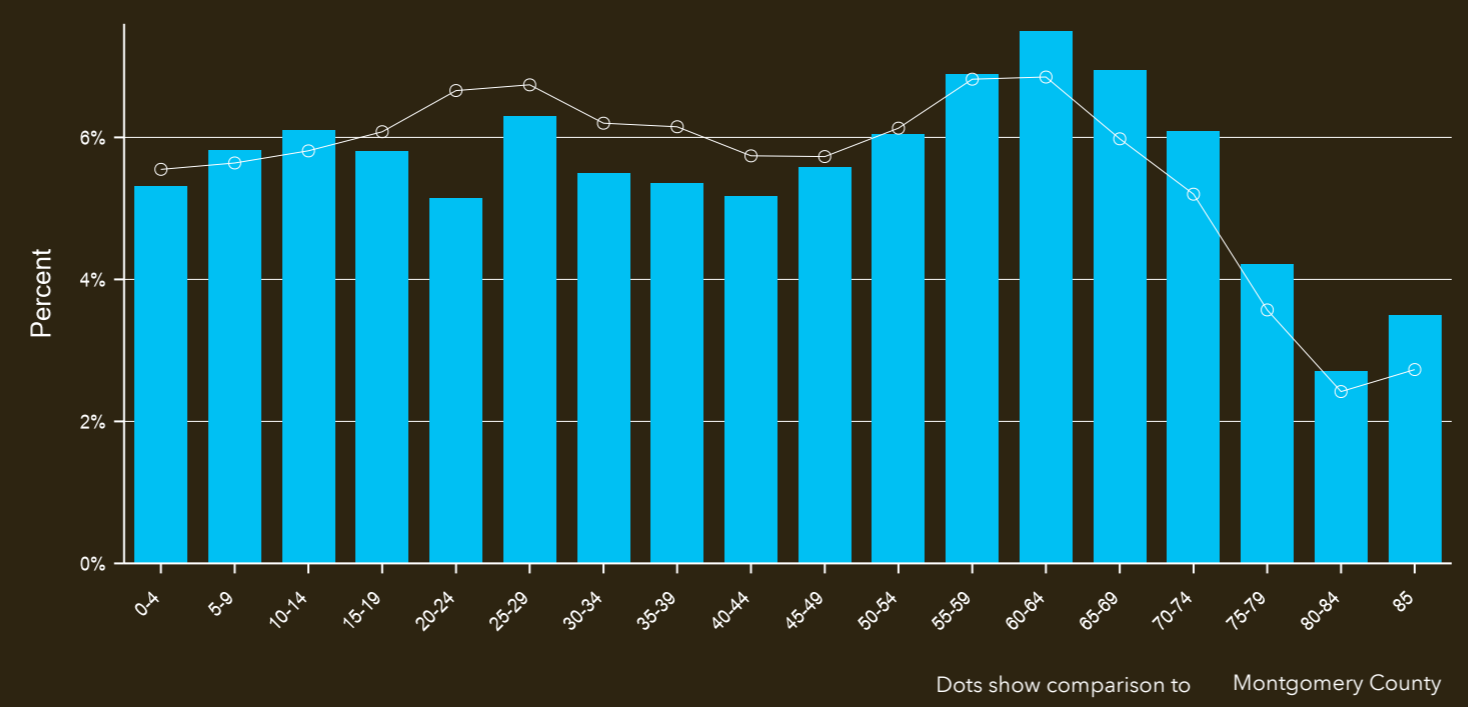


## Parish Boundaries: Precious Blood (Dayton)



Tapestry LifeMode	Households	HHs %	% US HHs	Index
<b>Affluent Estates (L1)</b>	0	0.00%	9.9%	0
<b>Upscale Avenues (L2)</b>	0	0.00%	5.7%	0
<b>Uptown Individuals (L3)</b>	0	0.00%	3.8%	0
<b>Family Landscapes (L4)</b>	0	0.00%	7.5%	0
<b>GenXurban (L5)</b>	4,490	23.91%	11.4%	211
<b>Cozy Country Living (L6)</b>	3,252	17.32%	12.0%	145
<b>Ethnic Enclaves (L7)</b>	0	0.00%	7.1%	0
<b>Middle Ground (L8)</b>	464	2.47%	10.9%	23
<b>Senior Styles (L9)</b>	1,451	7.73%	5.8%	133
<b>Rustic Outposts (L10)</b>	0	0.00%	8.2%	0
<b>Midtown Singles (L11)</b>	1,798	9.58%	6.2%	154
<b>Hometown (L12)</b>	7,322	39.00%	6.1%	635
<b>Next Wave (L13)</b>	0	0.00%	3.9%	0
<b>Scholars and Patriots (L14)</b>	0	0.00%	1.6%	0

## Age Profile

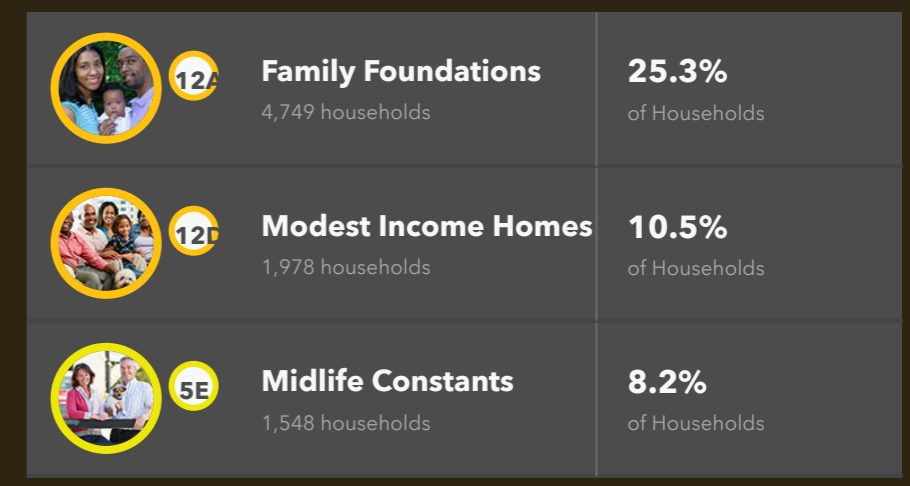


**Households By Income**  
The largest group: \$50,000 - \$74,999 (17.5%)  
The smallest group: \$200,000+ (2.3%)

Indicator	Value	Difference
<\$15,000	12.9%	+1.6%
\$15,000 - \$24,999	12.4%	+1.6%
\$25,000 - \$34,999	12.1%	+1.5%
\$35,000 - \$49,999	14.3%	+1.4%
\$50,000 - \$74,999	17.5%	-1.0%
\$75,000 - \$99,999	12.1%	-1.8%
\$100,000 - \$149,999	13.1%	-0.8%
\$150,000 - \$199,999	3.3%	-0.8%
\$200,000+	2.3%	-1.6%

Bars show deviation from Montgomery County

## Tapestry Segments



This infographic contains data provided by Esri. The vintage of the data is 2020.  
© 2020 Esri

