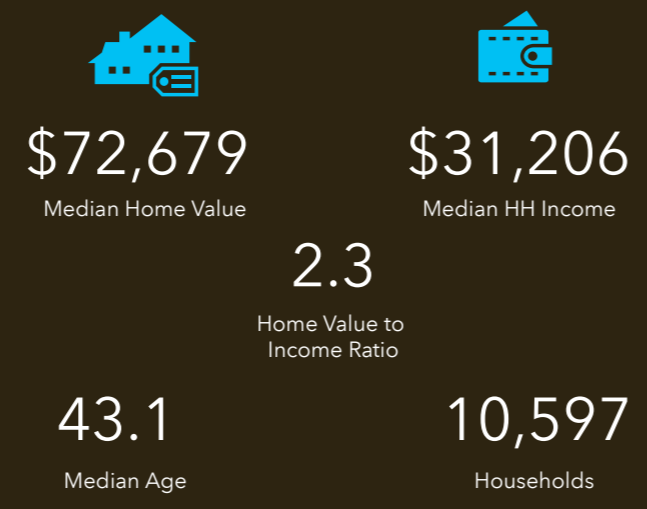




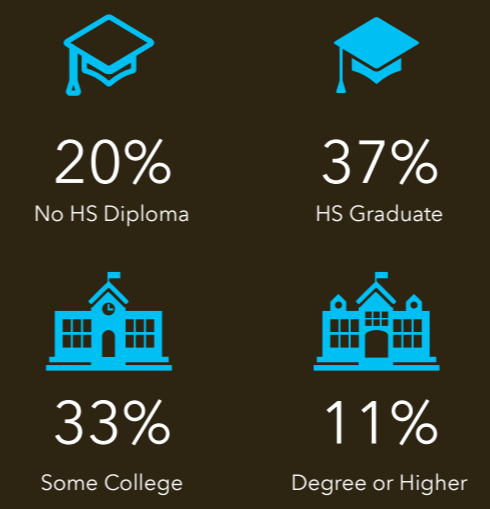
TAPESTRY SEGMENTATION

The Fabric of America's Neighborhoods

Key Facts



Education

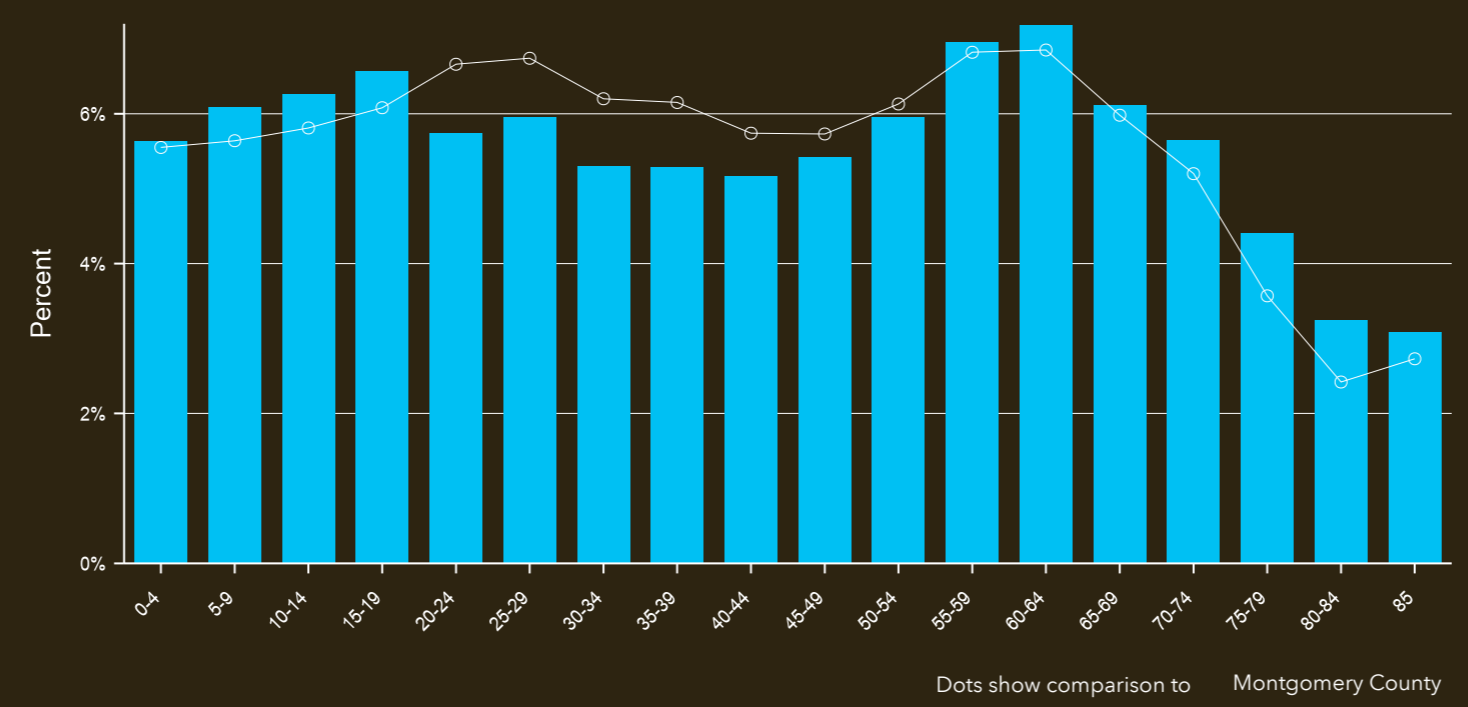


Parish Boundaries: St. Benedict the Moor (Dayton)



Tapestry LifeMode	Households	HHs %	% US HHs	Index
Affluent Estates (L1)	0	0.00%	9.9%	0
Upscale Avenues (L2)	0	0.00%	5.7%	0
Uptown Individuals (L3)	0	0.00%	3.8%	0
Family Landscapes (L4)	0	0.00%	7.5%	0
GenXurban (L5)	1,183	11.16%	11.4%	98
Cozy Country Living (L6)	1,195	11.28%	12.0%	94
Ethnic Enclaves (L7)	0	0.00%	7.1%	0
Middle Ground (L8)	586	5.53%	10.9%	51
Senior Styles (L9)	0	0.00%	5.8%	0
Rustic Outposts (L10)	0	0.00%	8.2%	0
Midtown Singles (L11)	64	0.60%	6.2%	10
Hometown (L12)	7,570	71.44%	6.1%	1,163
Next Wave (L13)	0	0.00%	3.9%	0
Scholars and Patriots (L14)	0	0.00%	1.6%	0

Age Profile



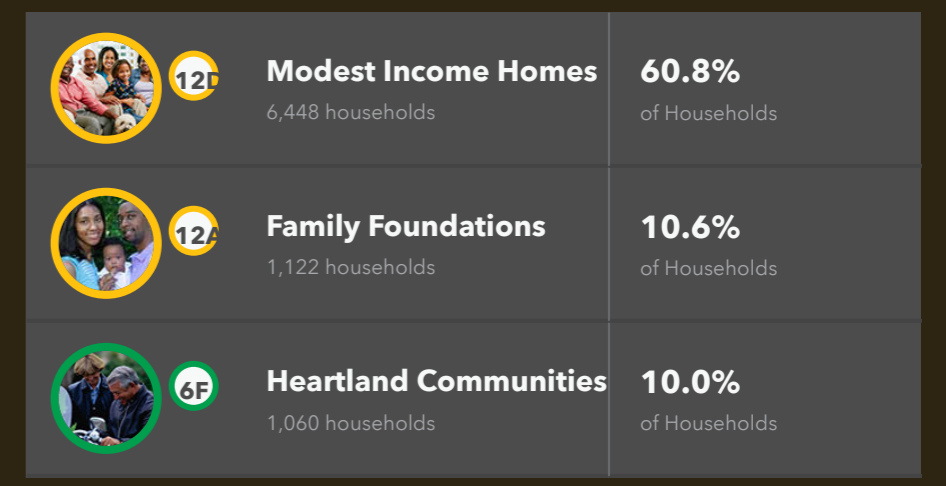
Households By Income

The largest group: <\$15,000 (21.3%)
The smallest group: \$150,000 - \$199,999 (0.6%)

Indicator	Value	Difference
<\$15,000	21.3%	+10.0%
\$15,000 - \$24,999	18.1%	+7.3%
\$25,000 - \$34,999	15.4%	+4.8%
\$35,000 - \$49,999	14.5%	+1.6%
\$50,000 - \$74,999	14.9%	-3.6%
\$75,000 - \$99,999	7.4%	-6.5%
\$100,000 - \$149,999	7.2%	-6.7%
\$150,000 - \$199,999	0.6%	-3.5%
\$200,000+	0.7%	-3.2%

Bars show deviation from Montgomery County

Tapestry Segments



This infographic contains data provided by Esri. The vintage of the data is 2020.
© 2020 Esri

