

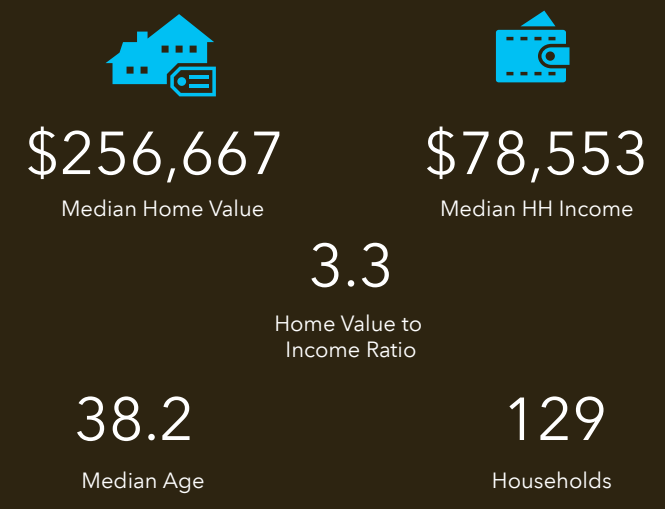


# TAPESTRY SEGMENTATION

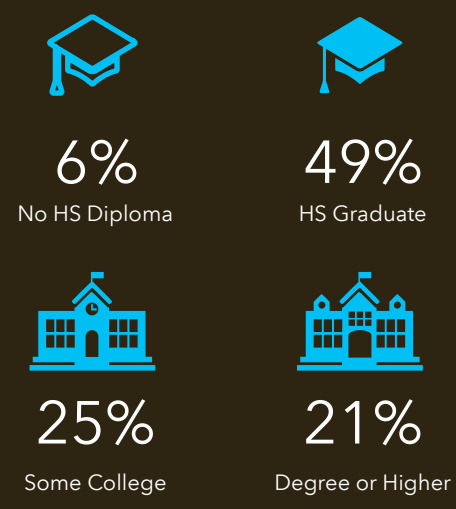
The Fabric of America's Neighborhoods

Tapestry LifeMode				
	Households	HHs %	% US HHs	Index
<b>Affluent Estates (L1)</b>	0	0.00%	9.9%	0
<b>Upscale Avenues (L2)</b>	0	0.00%	5.7%	0
<b>Uptown Individuals (L3)</b>	0	0.00%	3.8%	0
<b>Family Landscapes (L4)</b>	0	0.00%	7.5%	0
<b>GenXurban (L5)</b>	0	0.00%	11.4%	0
<b>Cozy Country Living (L6)</b>	129	100.00%	12.0%	835
<b>Ethnic Enclaves (L7)</b>	0	0.00%	7.1%	0
<b>Middle Ground (L8)</b>	0	0.00%	10.9%	0
<b>Senior Styles (L9)</b>	0	0.00%	5.8%	0
<b>Rustic Outposts (L10)</b>	0	0.00%	8.2%	0
<b>Midtown Singles (L11)</b>	0	0.00%	6.2%	0
<b>Hometown (L12)</b>	0	0.00%	6.1%	0
<b>Next Wave (L13)</b>	0	0.00%	3.9%	0
<b>Scholars and Patriots (L14)</b>	0	0.00%	1.6%	0

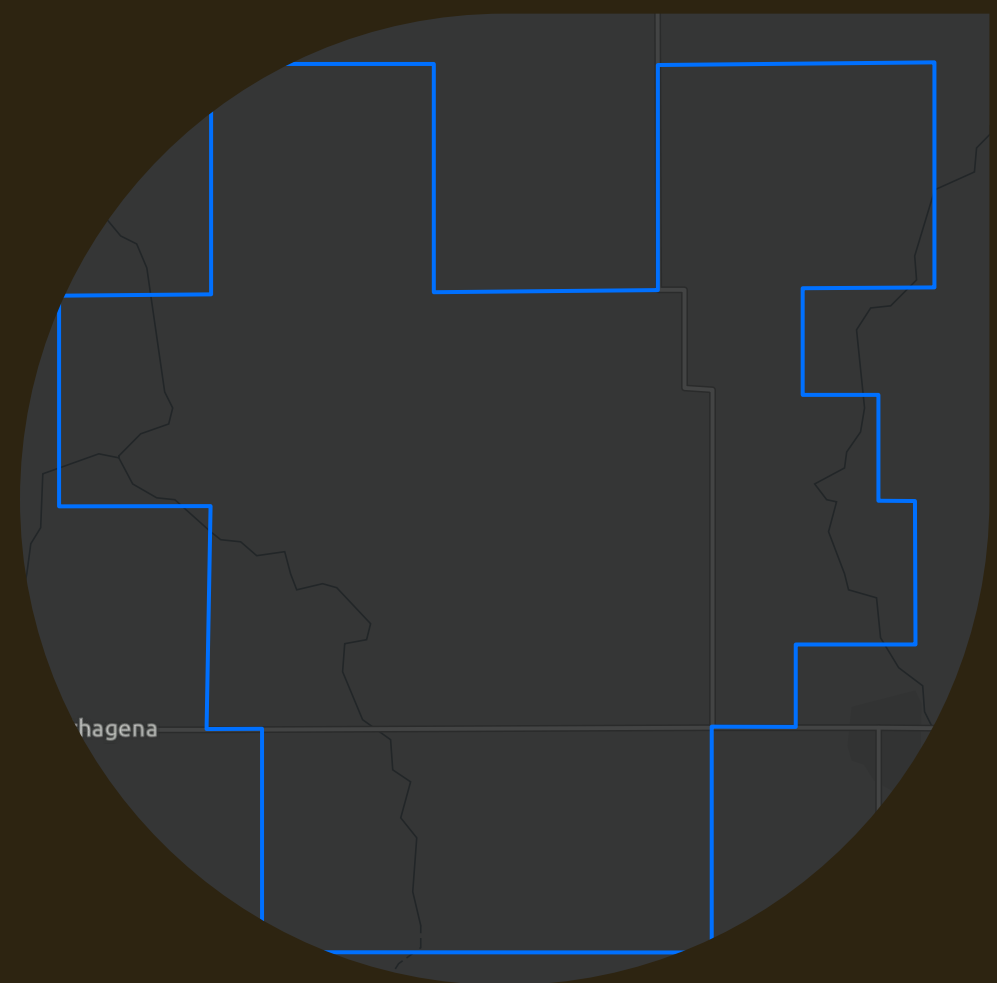
## Key Facts



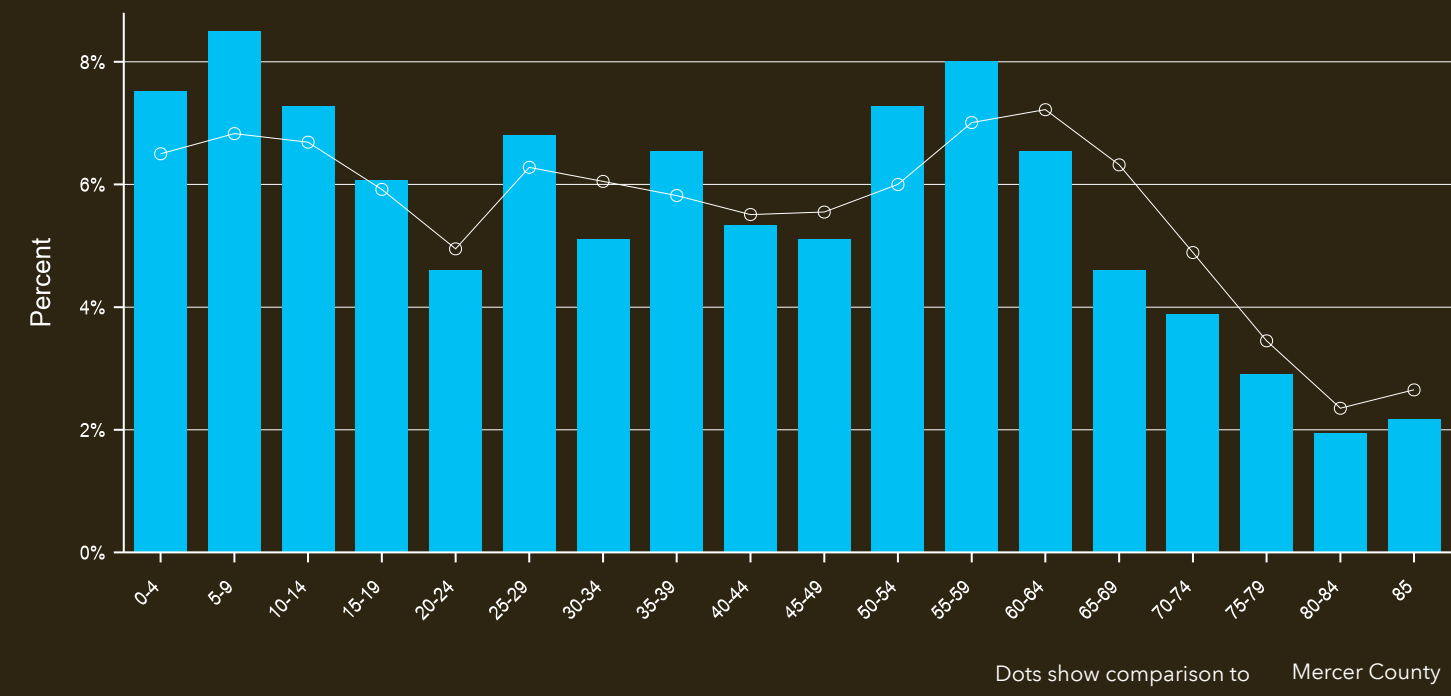
## Education



## Parish Boundaries: St. Sebastian (St. Sebastian)



## Age Profile

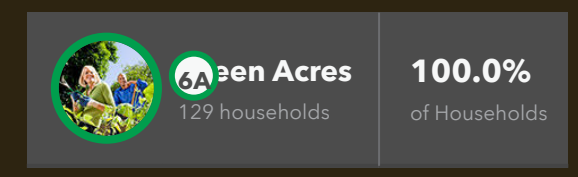


**Households By Income**  
 The largest group: \$100,000 - \$149,999 (26.4%)  
 The smallest group: \$200,000+ (0.8%)

Indicator	Value	Difference
<\$15,000	2.3%	-2.5%
\$15,000 - \$24,999	8.5%	+0.4%
\$25,000 - \$34,999	6.2%	-2.0%
\$35,000 - \$49,999	8.5%	-6.0%
\$50,000 - \$74,999	20.9%	-1.7%
\$75,000 - \$99,999	14.7%	-2.1%
\$100,000 - \$149,999	26.4%	+8.5%
\$150,000 - \$199,999	10.1%	+5.3%
\$200,000+	0.8%	-1.6%

Bars show deviation from Mercer County

## Tapestry Segments



This infographic contains data provided by Esri. The vintage of the data is 2020.  
 © 2020 Esri

